



SAHARA CRAFTSMAN

SINGLE FAMILY

Sq ft: 4,611

Beds: 4

Bath: 3.0

ABOUT THIS HOME

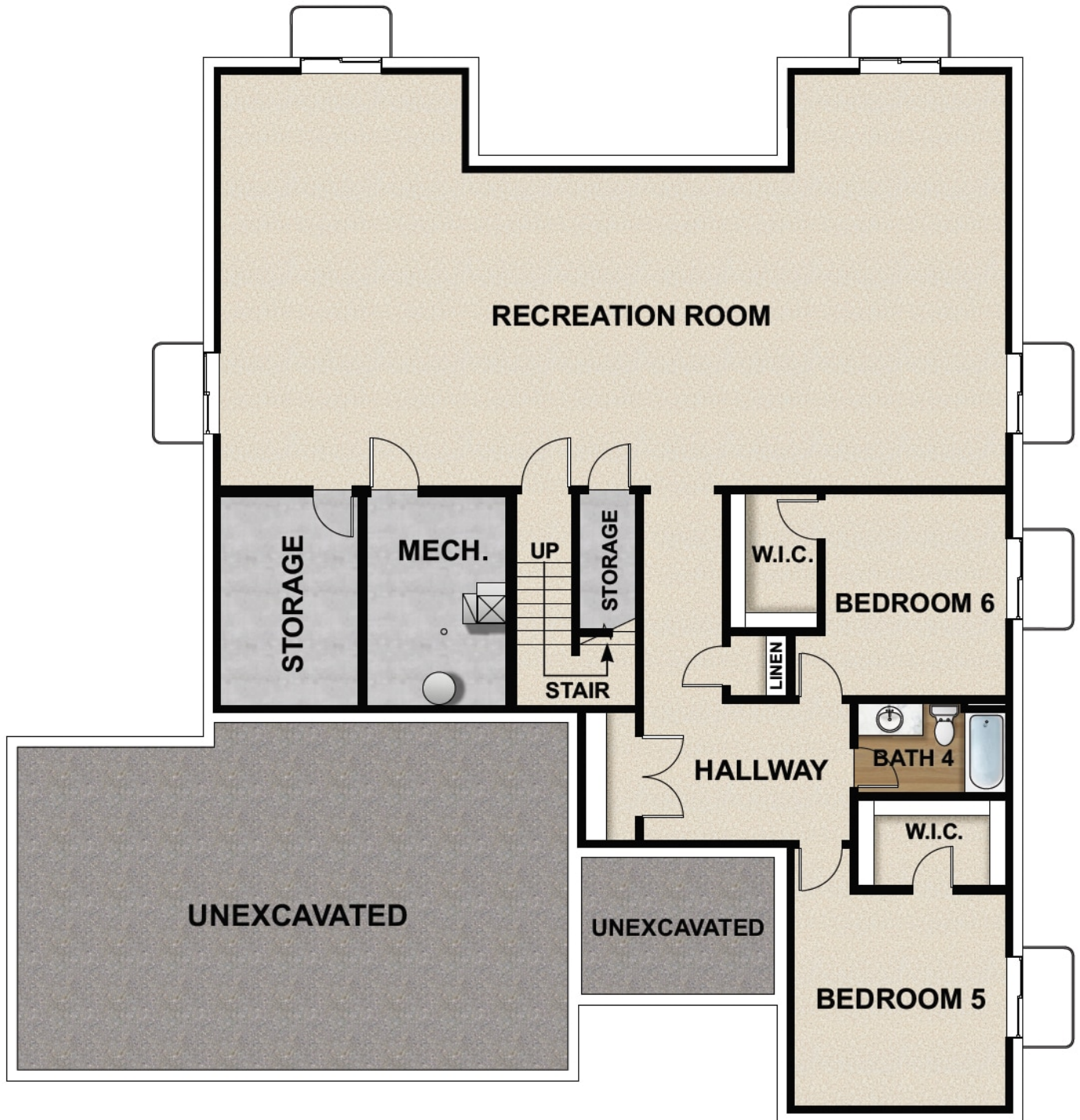
You will love the Sahara floor plan! This 4 bedroom, 3 bathroom, rambler home is open, bright, and spacious. With 2,308 finished square feet, and 4,541 total square feet, in the Sahara you have all the room you'll need. Off the entryway you have a full bathroom and two bedrooms with walk-in closets. Continuing inside, you'll find an impressive living room with tons of windows, and plenty of room. This space flows into the beautiful kitchen which features our signature island, a walk-in pantry, and a spacious dining area. Off the living room you will find a luxurious owner's suite with a spa-like bathroom; complete with a walk-in shower and huge walk-in closet. You also have another bedroom, bathroom, and laundry room. Through the mudroom, you'll find a 3 car garage with an optional 4th car garage. You have even more space in the optional finished basement. With a large recreation room, perfect for a home theater and game room, another full bathroom, and two more bedrooms with walk-in closets.

The Sahara floor plan also features a Rental Suite Option! [Learn more about our Rental Suites here!](#)

FLOOR PLAN



FLOOR PLAN



FLOOR PLAN

