



ECLIPSE VICTORIAN FARMHOUSE

SINGLE FAMILY

Sq ft: 3,173

Beds: 3

Bath: 2.5

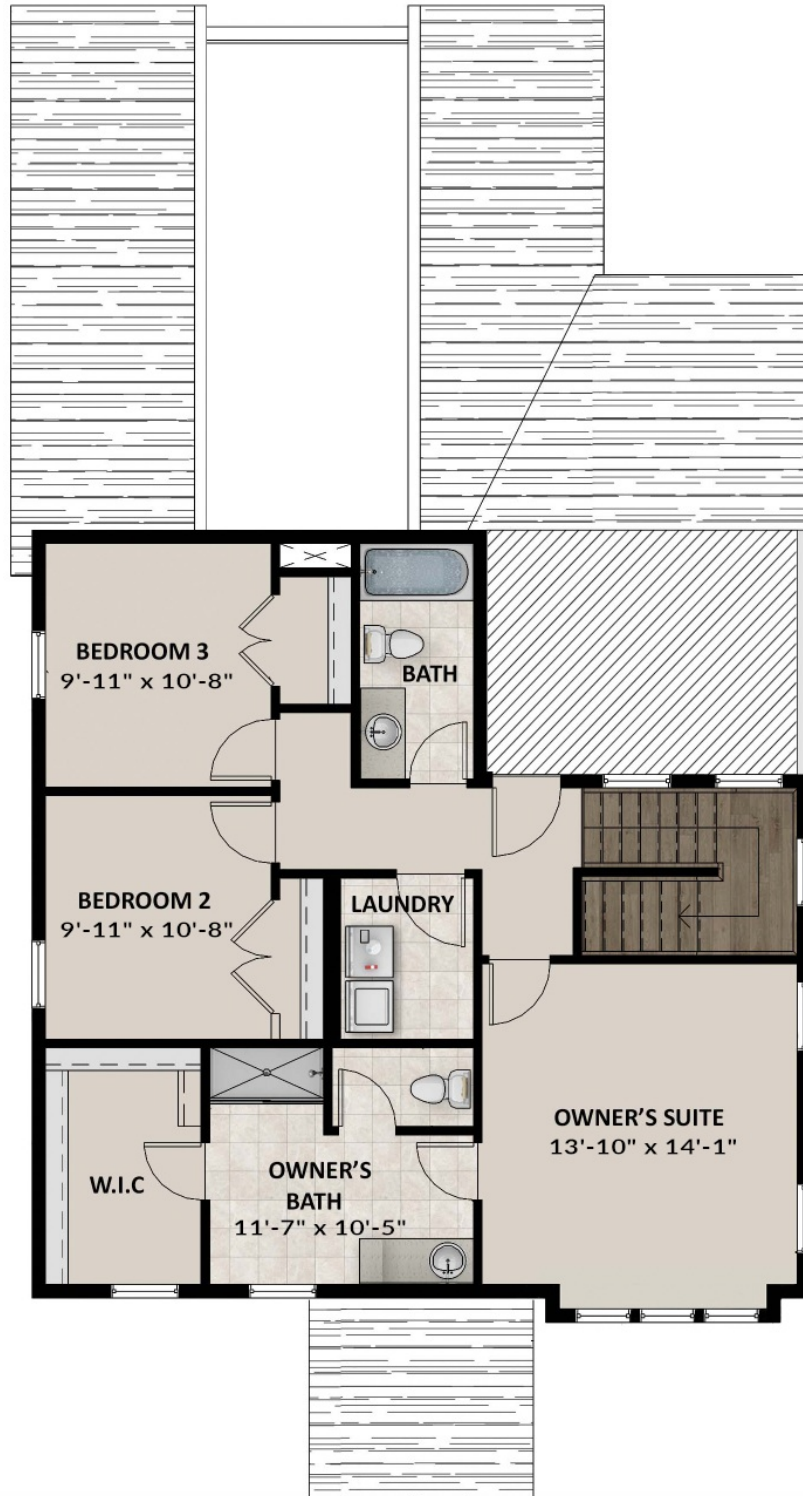
ABOUT THIS HOME

In the Eclipse, you wake up every morning with the world at your fingertips. Modern, luxurious, and homey, this 3-bedroom, 2.5 bathroom floor plan radiates an open, airy light and a lot of heart. Go ahead and take a look inside—you're finally home! Transform the flex room off the entryway to a home office, media room, or playroom. Past this space, you will find a charming dining room, a gorgeous kitchen with an island, and a large pantry. It's the perfect space to gather and enjoy friends and family. Outside is a massive 2 garage to fit your needs. Upstairs, leisure awaits in your luxurious owner's suite. Included in your suite is a spa-like bathroom with a walk-in shower and a large walk-in closet, making it the perfect space to relax and unwind. The second floor also has 2 spacious bedrooms with closets, a bathroom, and a well-placed laundry area. If you want to add even more space to add below your home, you have the option to finish the basement with a roomy recreation area, a comfortable bathroom, and 2 extra bedrooms with walk-in closets. With 2,124 finished square feet and 3,173 total square feet of beautiful space, you have all the room you need to live your best life yet.

FLOOR PLAN



FLOOR PLAN



FLOOR PLAN

