



## **NAPLES CRAFTSMAN - ADU OPTION**

**SINGLE FAMILY**

**CALL FOR PRICE**

Sq ft: 3,661

Beds: 4

Bath: 2.5

## **ABOUT THIS HOME**

Enjoy the luxury and comfort you've always wanted in the Naples, a 4 bedroom, 2.5 bathroom floor plan with 2,577 finished square feet and 3,661 total square feet. The entryway leads to a flex room that's perfect for relaxing by yourself, with family, or guests. The foyer also leads to a convenient closet, powder room, and mudroom. You'll then find a spacious family room with an optional fireplace for optimal coziness. This open space also includes a dining room and your gourmet kitchen with its granite countertops, large island, and spacious pantry. On the second floor, your huge owner's suite is perfect for relaxation. Included is a stunning owner's bathroom with a walk-in shower, luxurious tub, dual vanity, and walk-in closet. You'll also find 2 extra bedrooms with closets, a bathroom, a convenient laundry room, and a roomy loft to use however you wish. If you want to add even more space to your home, you have the option to finish the basement with a large recreation area, two bedrooms, and a bathroom. Transform the recreation room into a movie lounge, children's playroom, and more.

## FLOOR PLAN



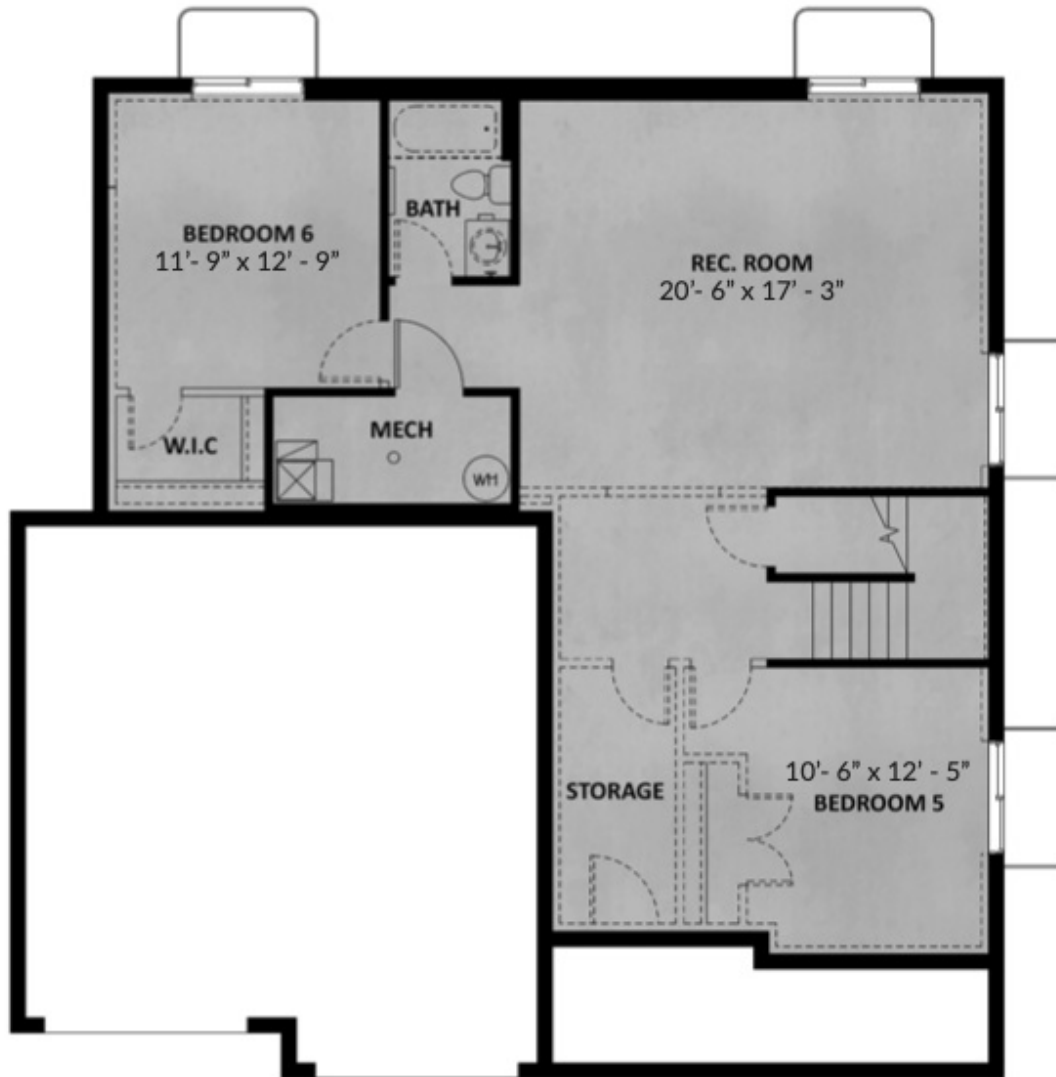
**MAIN LEVEL**

## FLOOR PLAN



**UPPER LEVEL**

## FLOOR PLAN



**UNFINISHED BASEMENT**

## FLOOR PLAN



**Finished Basement Floor**