



**676 WOODRUN WAY
#214, SARATOGA
SPRINGS, UT 84045**

**SINGLE FAMILY
CALL FOR PRICE**

Sq ft: 3,231
Beds: 5
Bath: 3.5

ABOUT THIS HOME

INCENTIVE: Up To \$24,000

HIGHLIGHTED INCLUDED FEATURES:

3 Car Garage

Finished Basement

3'x3' Rear Composite Deck

Upgraded Cabinets Throughout

6'x5' Kitchen Island

Quartz Countertops Throughout

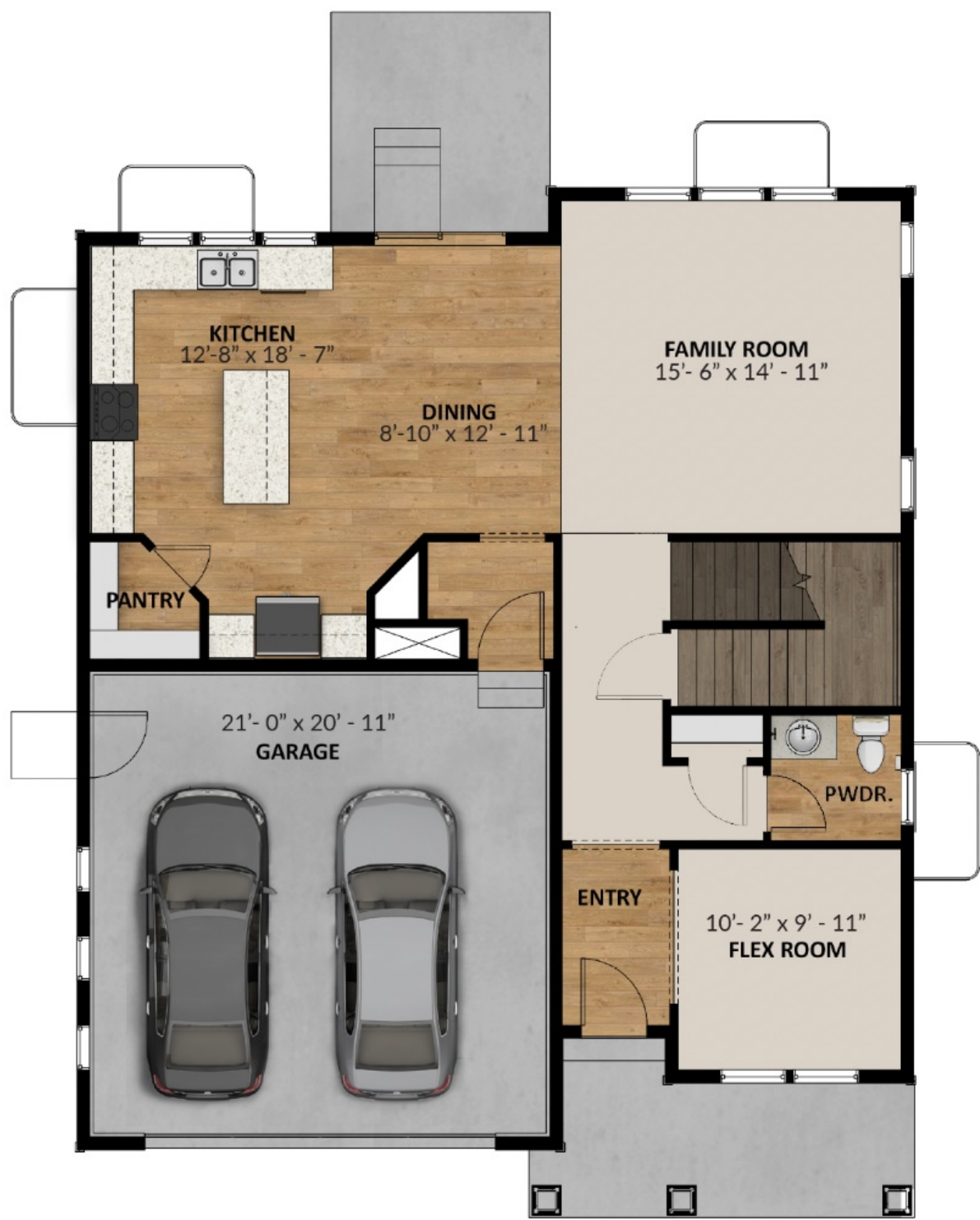
Gourmet Whirlpool Stainless Steel Gas Kitchen Appliances

"60 x"42 Walk-In Shower In Owner's Suite Bath

84" Double Sink Vanity In Owner's Suite

Open Interior Metal Railing

FLOOR PLAN



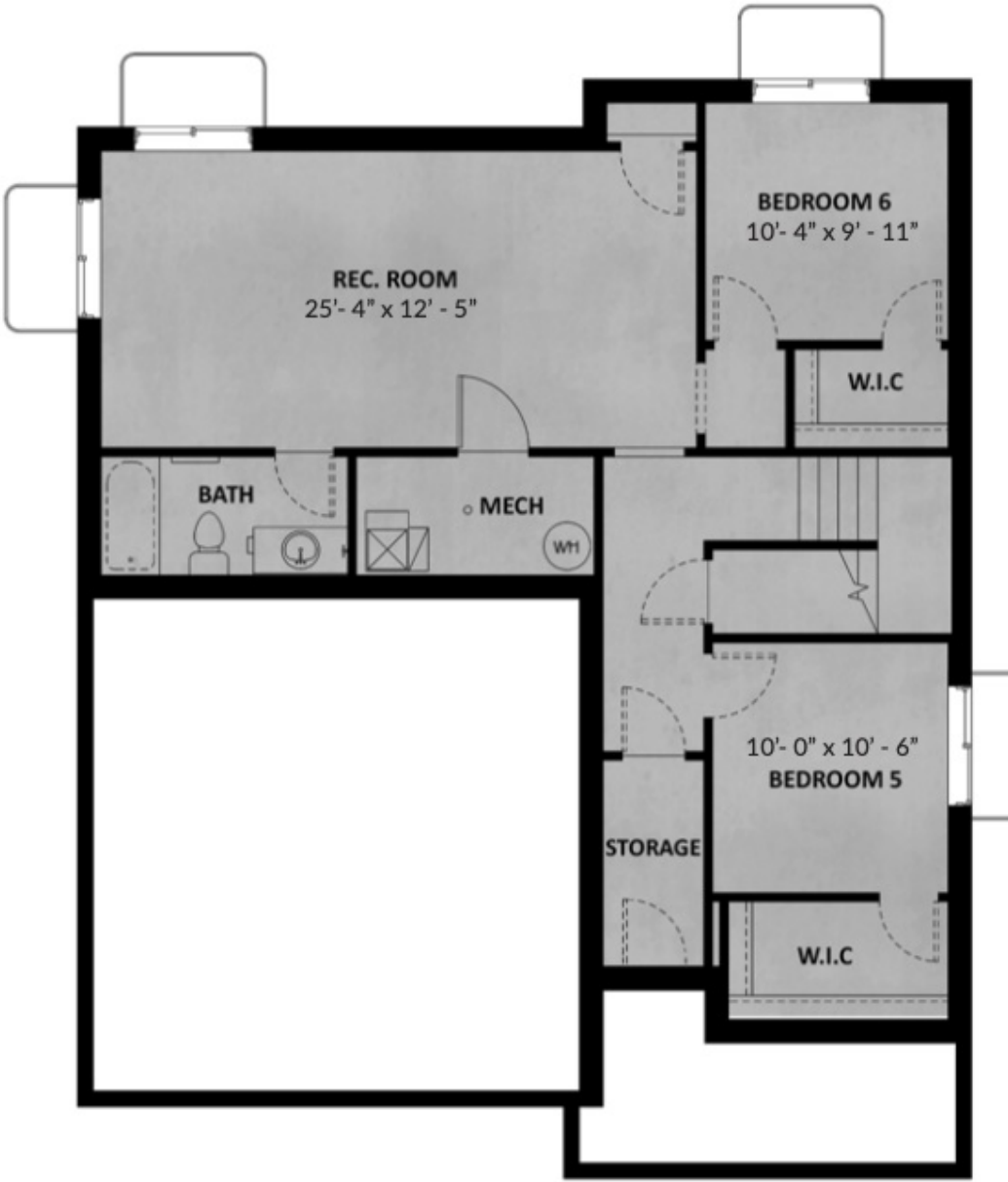
Pricing, features and availability are subject to change without notice. Fieldstone Homes makes reasonable efforts to provide accurate information, however, no warranties or representations are made as to its accuracy and Fieldstone Homes assumes no liability or responsibility for any errors in pricing or content. All pricing information, including promotions and incentives, must be verified by an authorized representative for the appropriate community and home. Photography, floor plans, elevations, renderings, virtual tours, maps, square footage and dimensions are approximate and for illustration purposes only, and will vary from the homes as built and are subject to change without notice. Homes in each neighborhood may be owned and sold by a separate limited liability company (LLC) or other corporate entity.

FLOOR PLAN



Pricing, features and availability are subject to change without notice. Fieldstone Homes makes reasonable efforts to provide accurate information, however, no warranties or representations are made as to its accuracy and Fieldstone Homes assumes no liability or responsibility for any errors in pricing or content. All pricing information, including promotions and incentives, must be verified by an authorized representative for the appropriate community and home. Photography, floor plans, elevations, renderings, virtual tours, maps, square footage and dimensions are approximate and for illustration purposes only, and will vary from the homes as built and are subject to change without notice. Homes in each neighborhood may be owned and sold by a separate limited liability company (LLC) or other corporate entity.

FLOOR PLAN



UNFINISHED BASEMENT

Pricing, features and availability are subject to change without notice. Fieldstone Homes makes reasonable efforts to provide accurate information, however, no warranties or representations are made as to its accuracy and Fieldstone Homes assumes no liability or responsibility for any errors in pricing or content. All pricing information, including promotions and incentives, must be verified by an authorized representative for the appropriate community and home. Photography, floor plans, elevations, renderings, virtual tours, maps, square footage and dimensions are approximate and for illustration purposes only, and will vary from the homes as built and are subject to change without notice. Homes in each neighborhood may be owned and sold by a separate limited liability company (LLC) or other corporate entity.