



**599 W PINE
MOUNTAIN DRIVE
#203, SARATOGA
SPRINGS, UT 84045**

SINGLE FAMILY

CALL FOR PRICE

Sq ft: 4,430

Beds: 5

Bath: 3.5

ABOUT THIS HOME

HIGHLIGHTED INCLUDED FEATURES:

3'x3' Rear Composite Deck

Finished Daylight Basement

Large Vaulted Ceiling In Great Room

32" Interior Fireplace With Tile Surround & Mantel

Vented Hood In Kitchen

6'x5' Kitchen Island

Gourmet Whirlpool Stainless Steel Gas Kitchen Appliances

Stainless Steel Gas Double Ovens

Quartz Countertops Throughout

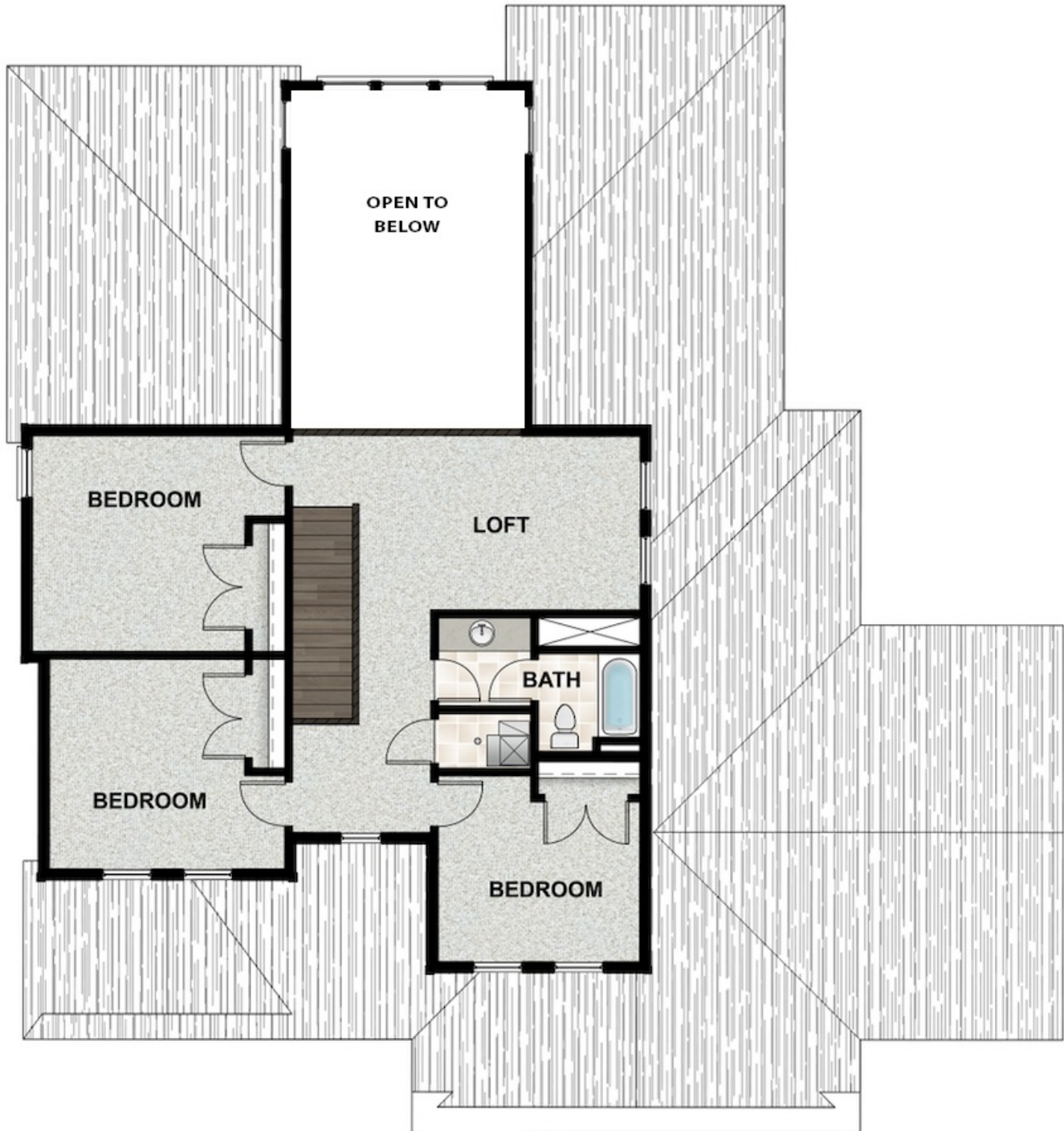
Gourmet Tile Backsplash In Kitchen

84" Double Sink Vanity In Owner's Suite Bath

FLOOR PLAN



FLOOR PLAN



FLOOR PLAN

