



**109 N BLUE  
MOUNTAIN DRIVE  
#208, SARATOGA  
SPRINGS, UT 84045**

SINGLE FAMILY

**CALL FOR PRICE**

Sq ft: 3,231

Beds: 5

Bath: 3.5

## **ABOUT THIS HOME**

INCENTIVE: Up To \$24,000

### HIGHLIGHTED INCLUDED FEATURES:

12' RV Pad

3'x 3' Rear Composite Deck

Corner Lot Landscaping

Finished Basement

Upgraded Cabinets Throughout

6'x 5' Kitchen Island With Cabinets

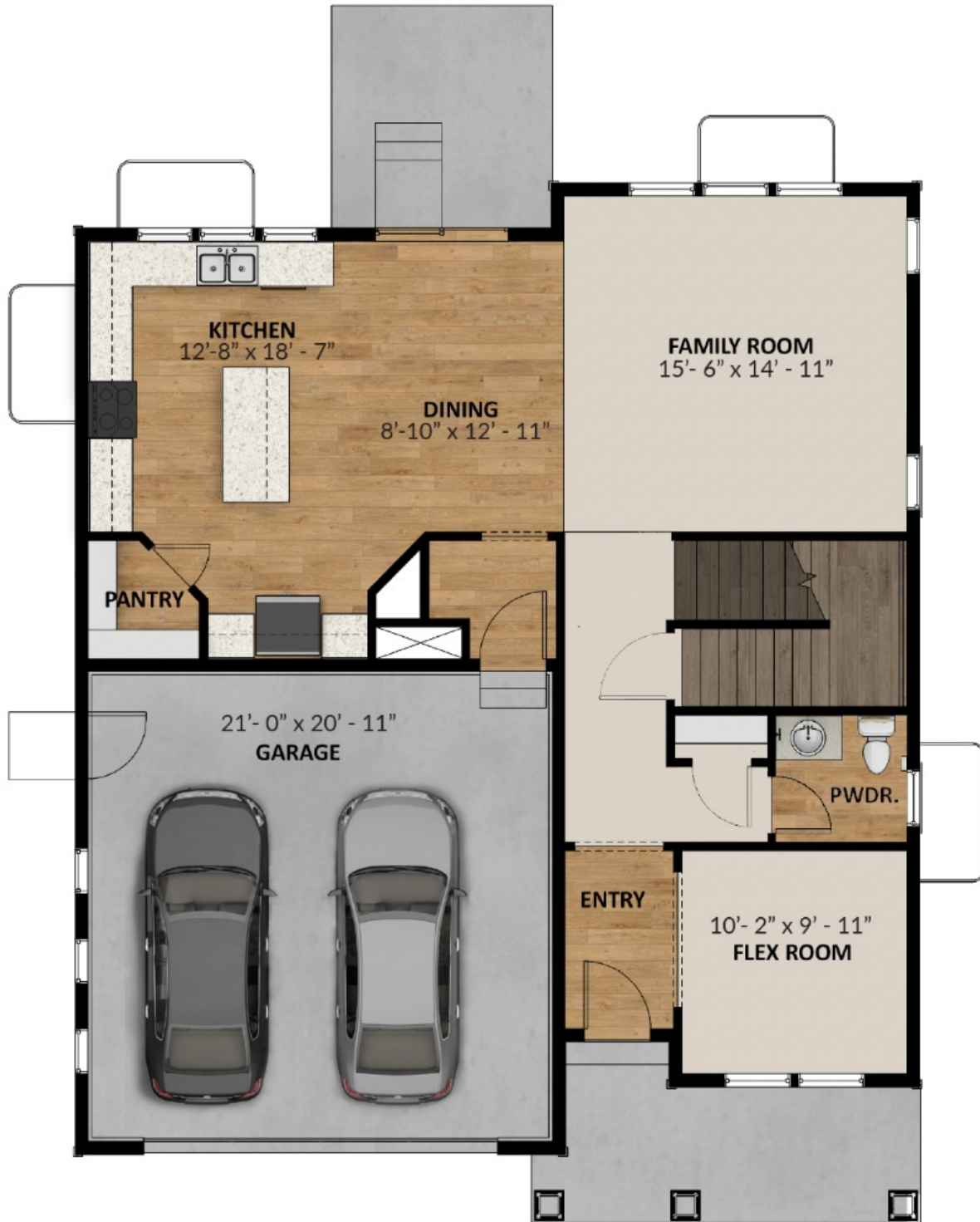
Dovetail With Soft Close Hardware Throughout

Vented Hood In Kitchen

Gourmet Whirlpool Stainless Steel Gas Kitchen Appliances

Gas Double Ovens

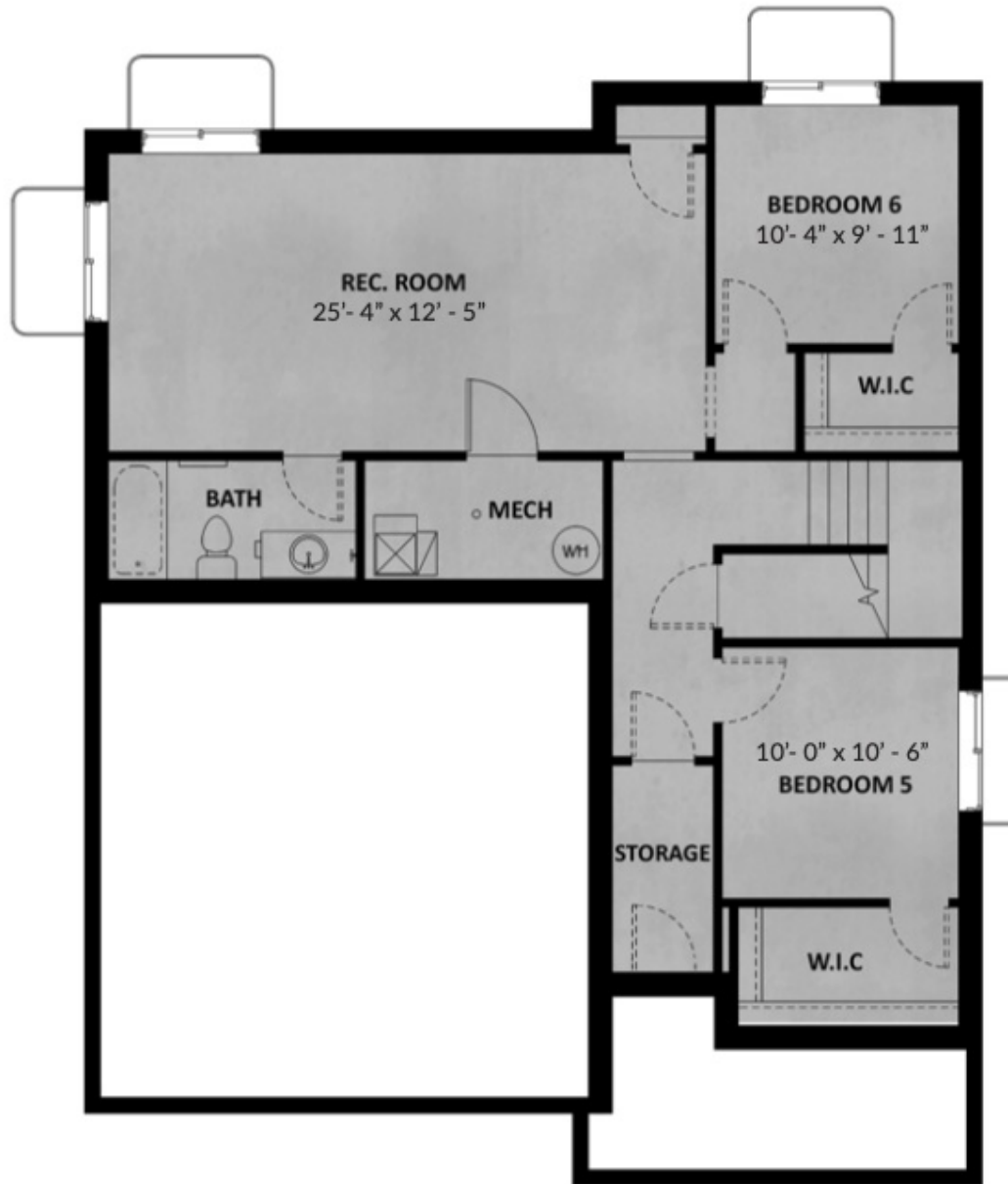
## FLOOR PLAN



## FLOOR PLAN



## FLOOR PLAN



## UNFINISHED BASEMENT