



**108 W WOODRUN  
WAY #209,  
SARATOGA SPRINGS,  
UT 84045**

**SINGLE FAMILY  
CALL FOR PRICE**

Sq ft: 3,661  
Beds: 6  
Bath: 3.5

## **ABOUT THIS HOME**

INCENTIVE: \$28,000

### HIGHLIGHTED INCLUDED FEATURES:

Corner Lot Landscaping

Finished Basement

3'x4' Rear Composite Deck

Upgraded Cabinets Throughout

6'x5' Kitchen Island

Whirlpool Fingerprint Resistant Gas Kitchen Appliances

Upgraded Flooring Throughout

84" Double Sink Vanity In Owner's Suite Bath

60"x42" Walk-In Shower In Owner's Suite Bath With Cultured Marble Surround And Glass Door

50 Gallon Conventional Water Heater

## FLOOR PLAN



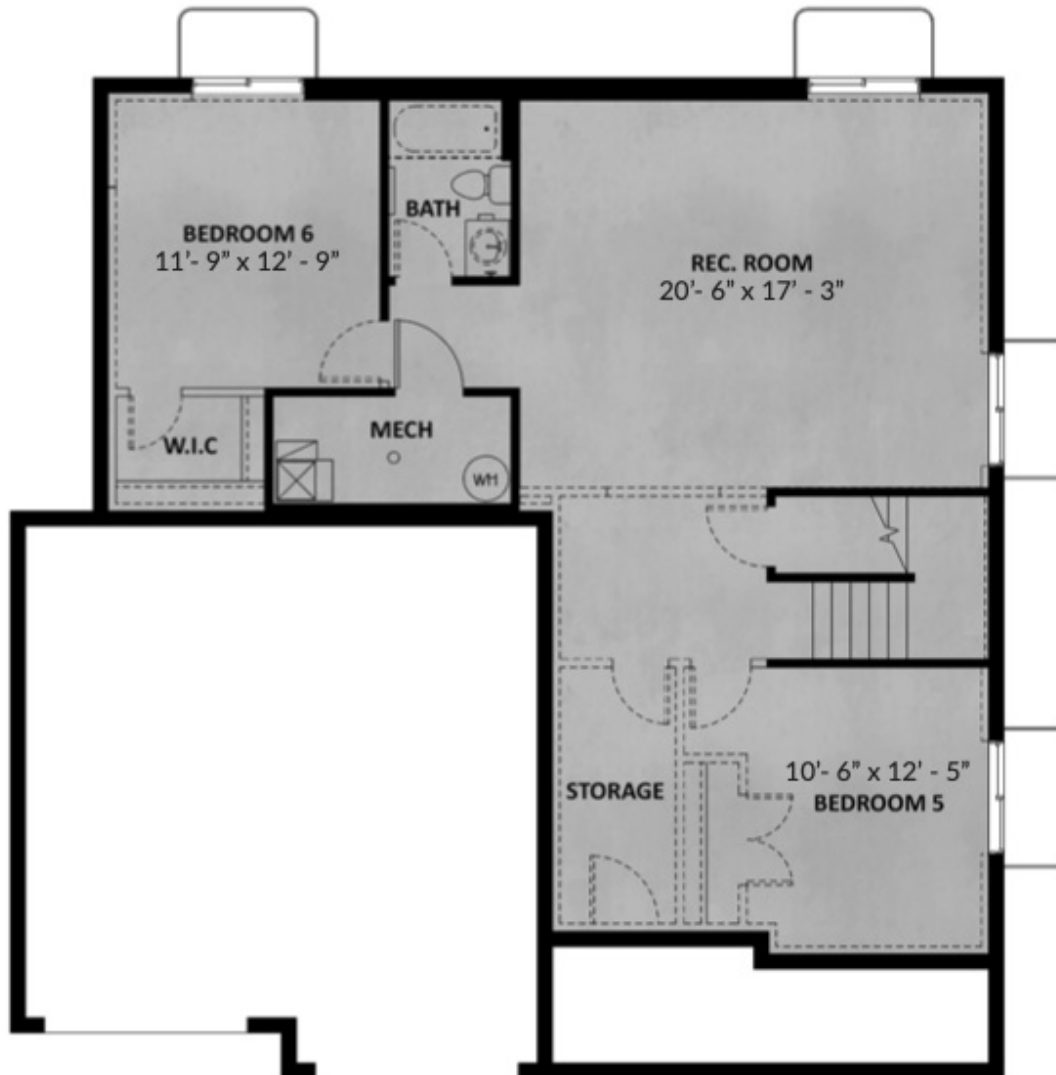
**MAIN LEVEL**

## FLOOR PLAN



### UPPER LEVEL

## FLOOR PLAN



### UNFINISHED BASEMENT