



BRIDGER FARMHOUSE

SINGLE FAMILY

Sq ft: 2,289

Beds: 3

Bath: 2.5

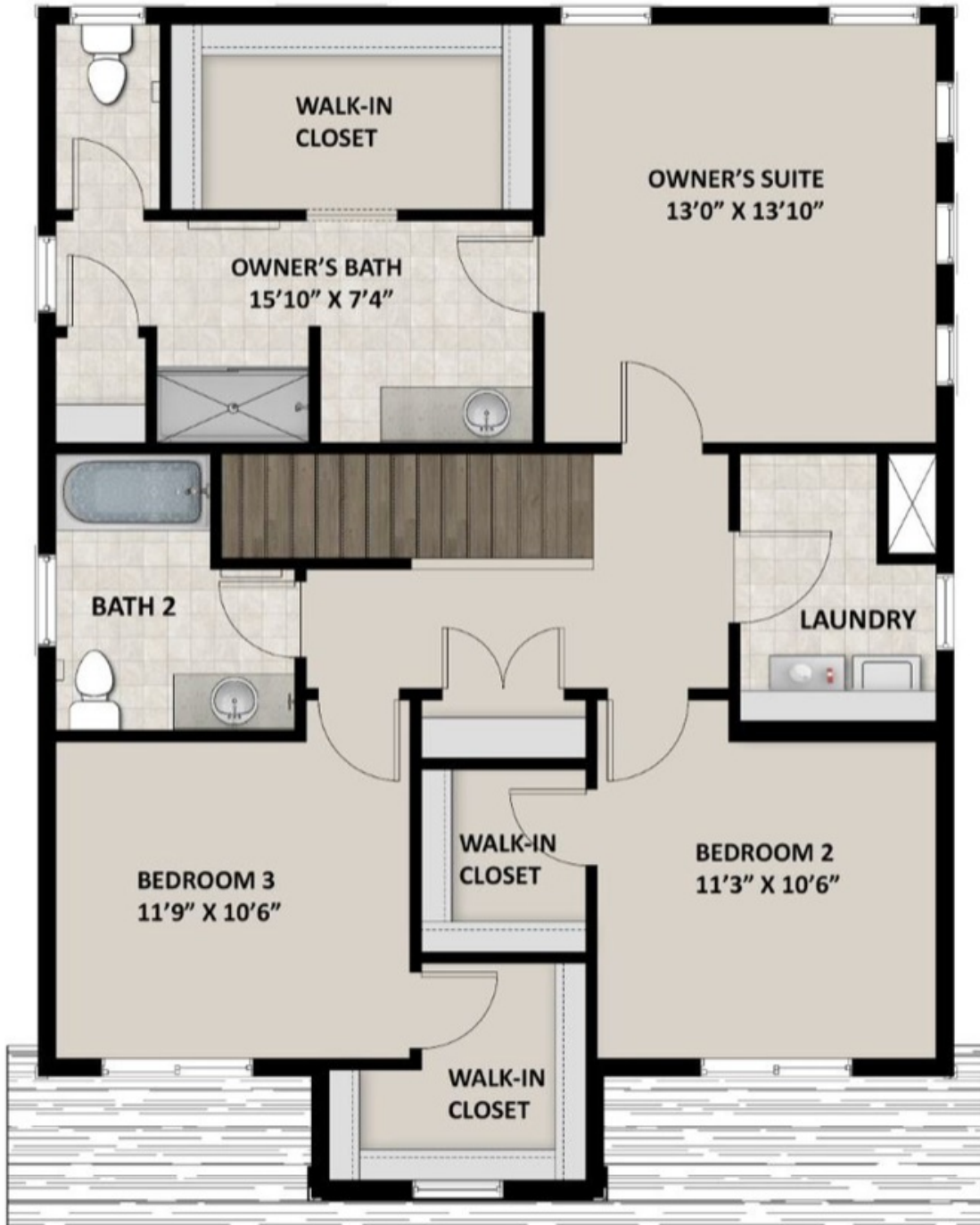
ABOUT THIS HOME

The Bridger displays an open-concept layout with 3 bedrooms, 2.5 bathrooms, 1,698 finished square feet, and 2,289 total square feet. You'll find a powder bath and closet space right off the entry on the main level. An open family room, dining room, and kitchen provide you and your family with plenty of living space for socializing, entertaining, relaxing, and enjoying meals together. The kitchen showcases a large island, with a walk-in pantry and mudroom next to the garage. On the second level, you'll find a gorgeous owner's suite with a spacious owner's bathroom that includes a walk-in closet, large vanity, shower, storage space, and a water closet. Two bedrooms featuring walk-in closets, a bathroom, closet, and a convenient laundry room are also on this floor. You can create a recreation room, bedroom, bathroom, and storage space in an optional finished basement for additional living space. Customize the recreational room to have a fully functional space of your design choice—whether that be for a movie lounge, children's playroom, or craft room—the possibilities are endless.

FLOOR PLAN



FLOOR PLAN



FLOOR PLAN

