



**921 W
CHOKECHERRY
DRIVE #153,
MAPLETON, UT 84664**

SINGLE FAMILY

CALL FOR PRICE

Sq ft: 4,430

Beds: 5

Bath: 3.5

ABOUT THIS HOME

INCENTIVE: \$10,000

Highlighted Included Features:

Walk-out Finished Basement

42" Interior Fireplace

Upgraded Cabinets Throughout

6'x5' Kitchen Island With Cabinets & Sink

Quartz Countertops Throughout

Tile Backsplash In Kitchen

60"x42" Walk-In Shower In Owner's Suite Bath

Luxury Waterproof Vinyl Flooring

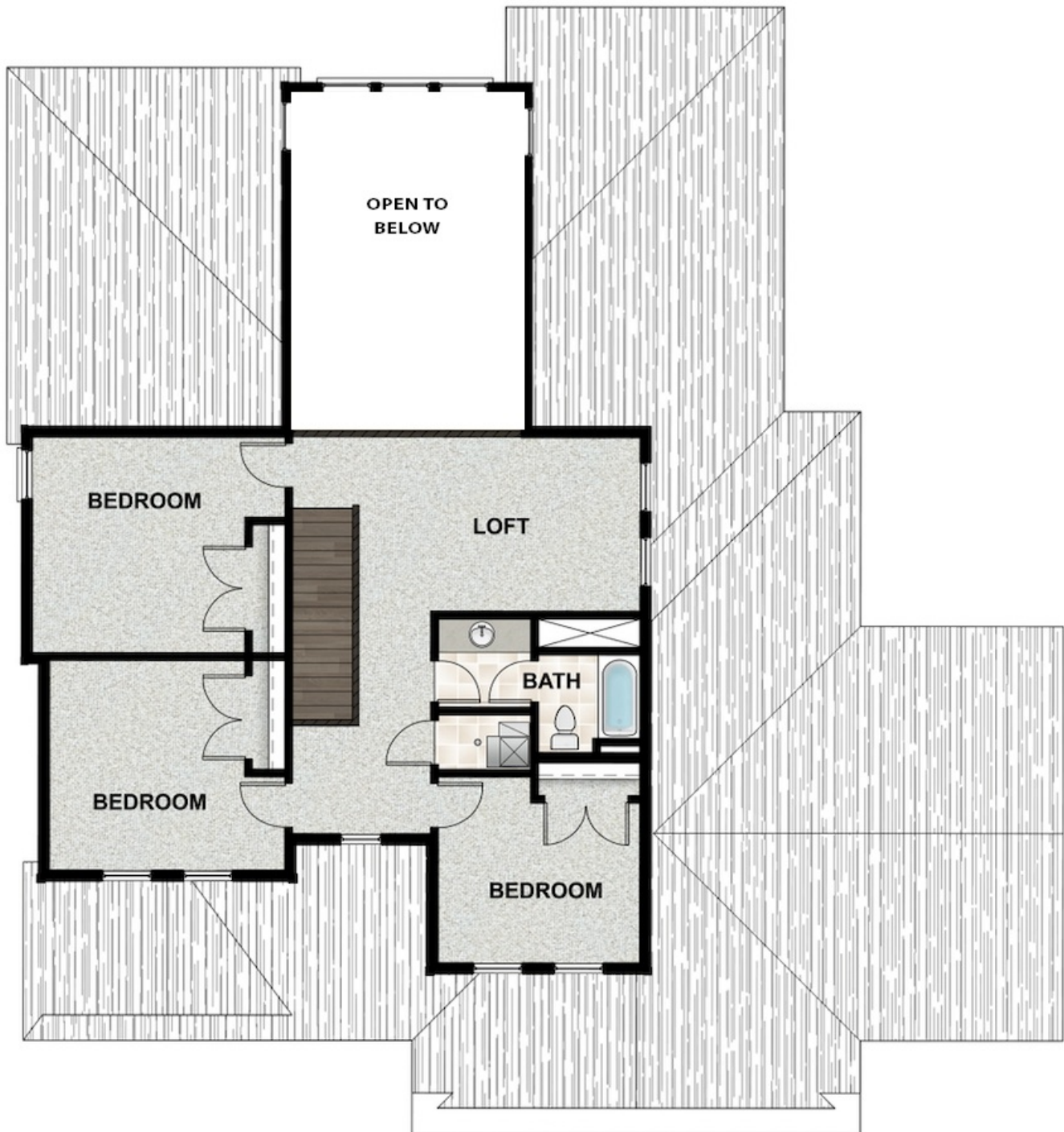
Upgraded Carpet Flooring

Open Interior Metal Railing

FLOOR PLAN



FLOOR PLAN



FLOOR PLAN

