



**1026 W
CHOKECHERRY
DRIVE #135,
MAPLETON, UT 84664**

**SINGLE FAMILY
CALL FOR PRICE**

Sq ft: 4,315

Beds: 5

Bath: 3.5

ABOUT THIS HOME

INCENTIVE: Up To \$29,000

HIGHLIGHTED INCLUDED FEATURES:

Finished Basement

Covered Rear Patio/Deck

42" Interior Fireplace With Tile Surround & Mantel

Upgraded Cabinets Throughout

7'x6' Kitchen Island With Cabinets & Sink

Gourmet Whirlpool Stainless Steel Gas Kitchen Appliances

Quartz Countertops Throughout

Gourmet Tile Backsplash In Kitchen

72"x42" Walk-In Shower With Cultured Marble Surround & Glass Door In Owner's Suite Bath

FLOOR PLAN



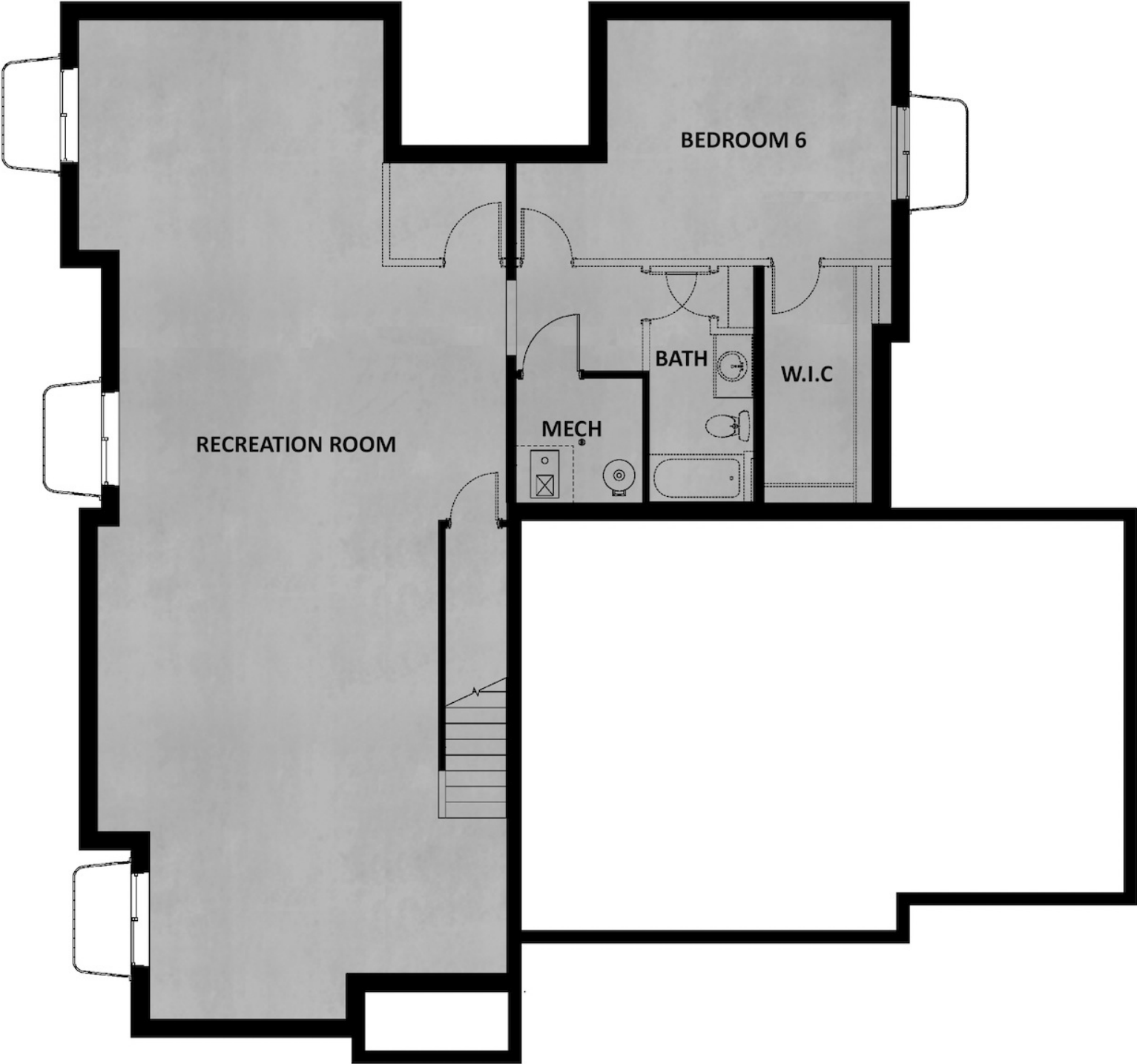
Pricing, features and availability are subject to change without notice. Fieldstone Homes makes reasonable efforts to provide accurate information, however, no warranties or representations are made as to its accuracy and Fieldstone Homes assumes no liability or responsibility for any errors in pricing or content. All pricing information, including promotions and incentives, must be verified by an authorized representative for the appropriate community and home. Photography, floor plans, elevations, renderings, virtual tours, maps, square footage and dimensions are approximate and for illustration purposes only, and will vary from the homes as built and are subject to change without notice. Homes in each neighborhood may be owned and sold by a separate limited liability company (LLC) or other corporate entity.

FLOOR PLAN



Pricing, features and availability are subject to change without notice. Fieldstone Homes makes reasonable efforts to provide accurate information, however, no warranties or representations are made as to its accuracy and Fieldstone Homes assumes no liability or responsibility for any errors in pricing or content. All pricing information, including promotions and incentives, must be verified by an authorized representative for the appropriate community and home. Photography, floor plans, elevations, renderings, virtual tours, maps, square footage and dimensions are approximate and for illustration purposes only, and will vary from the homes as built and are subject to change without notice. Homes in each neighborhood may be owned and sold by a separate limited liability company (LLC) or other corporate entity.

FLOOR PLAN



Pricing, features and availability are subject to change without notice. Fieldstone Homes makes reasonable efforts to provide accurate information, however, no warranties or representations are made as to its accuracy and Fieldstone Homes assumes no liability or responsibility for any errors in pricing or content. All pricing information, including promotions and incentives, must be verified by an authorized representative for the appropriate community and home. Photography, floor plans, elevations, renderings, virtual tours, maps, square footage and dimensions are approximate and for illustration purposes only, and will vary from the homes as built and are subject to change without notice. Homes in each neighborhood may be owned and sold by a separate limited liability company (LLC) or other corporate entity.