



TIMBERLAND TRANSITIONAL

Sq ft: 3,769
Beds: 3
Bath: 2.5

ABOUT THIS HOME

Enjoy coming home to the Timberland, with 3 bedrooms, 2.5 bathrooms, 2,619 finished square feet, and a two-car garage. The Timberland floor plan features an open concept layout, open to below great room with plenty of light, a kitchen with a large island and walk-in pantry, spacious owner's suite, and a walk-in shower with a double vanity. An upstairs loft overlooking the family room creates an additional cozy space on the second level. Features a finished basement. The Crossings community also features amenities from a large community swimming pool & ponds, pickle-ball courts, basketball courts, tennis courts, walking trails and so much more!

Renderings Are Concept Only

Pricing, features and availability are subject to change without notice. Fieldstone Homes makes reasonable efforts to provide accurate information, however, no warranties or representations are made as to its accuracy and Fieldstone Homes assumes no liability or responsibility for any errors in pricing or content. All pricing information, including promotions and incentives, must be verified by an authorized representative for the appropriate community and home. Photography, floor plans, elevations, renderings, virtual tours, maps, square footage and dimensions are approximate and for illustration purposes only, and will vary from the homes as built and are subject to change without notice. Homes in each neighborhood may be owned and sold by a separate limited liability company (LLC) or other separate entity.

FLOOR PLAN



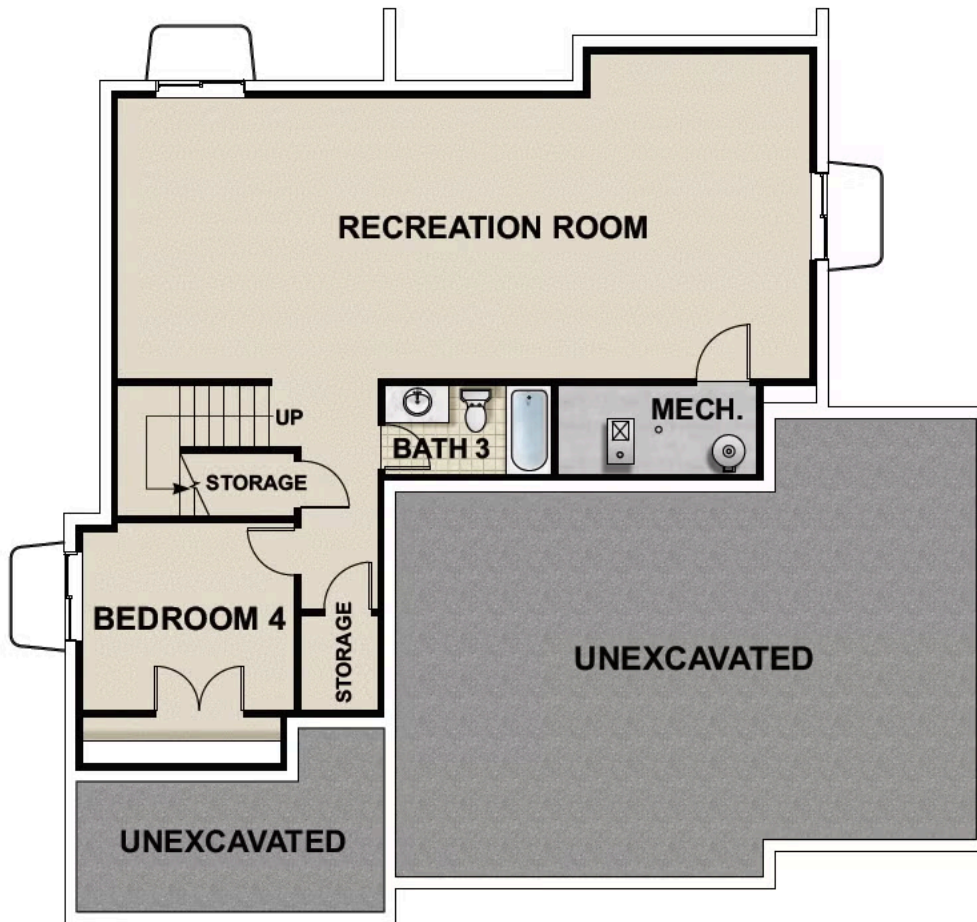
Pricing, features and availability are subject to change without notice. Fieldstone Homes makes reasonable efforts to provide accurate information, however, no warranties or representations are made as to its accuracy and Fieldstone Homes assumes no liability or responsibility for any errors in pricing or content. All pricing information, including promotions and incentives, must be verified by an authorized representative for the appropriate community and home. Photography, floor plans, elevations, renderings, virtual tours, maps, square footage and dimensions are approximate and for illustration purposes only, and will vary from the homes as built and are subject to change without notice. Homes in each neighborhood may be owned and sold by a separate limited liability company (LLC) or other corporate entity.

FLOOR PLAN



Pricing, features and availability are subject to change without notice. Fieldstone Homes makes reasonable efforts to provide accurate information, however, no warranties or representations are made as to its accuracy and Fieldstone Homes assumes no liability or responsibility for any errors in pricing or content. All pricing information, including promotions and incentives, must be verified by an authorized representative for the appropriate community and home. Photography, floor plans, elevations, renderings, virtual tours, maps, square footage and dimensions are approximate and for illustration purposes only, and will vary from the homes as built and are subject to change without notice. Homes in each neighborhood may be owned and sold by a separate limited liability company (LLC) or other corporate entity.

FLOOR PLAN



Pricing, features and availability are subject to change without notice. Fieldstone Homes makes reasonable efforts to provide accurate information, however, no warranties or representations are made as to its accuracy and Fieldstone Homes assumes no liability or responsibility for any errors in pricing or content. All pricing information, including promotions and incentives, must be verified by an authorized representative for the appropriate community and home. Photography, floor plans, elevations, renderings, virtual tours, maps, square footage and dimensions are approximate and for illustration purposes only, and will vary from the homes as built and are subject to change without notice. Homes in each neighborhood may be owned and sold by a separate limited liability company (LLC) or other corporate entity.