



## OAKLEY CRAFTSMAN - ADU OPTION

SINGLE FAMILY

Sq ft: 3,209

Beds: 3

Bath: 2.0

## ABOUT THIS HOME

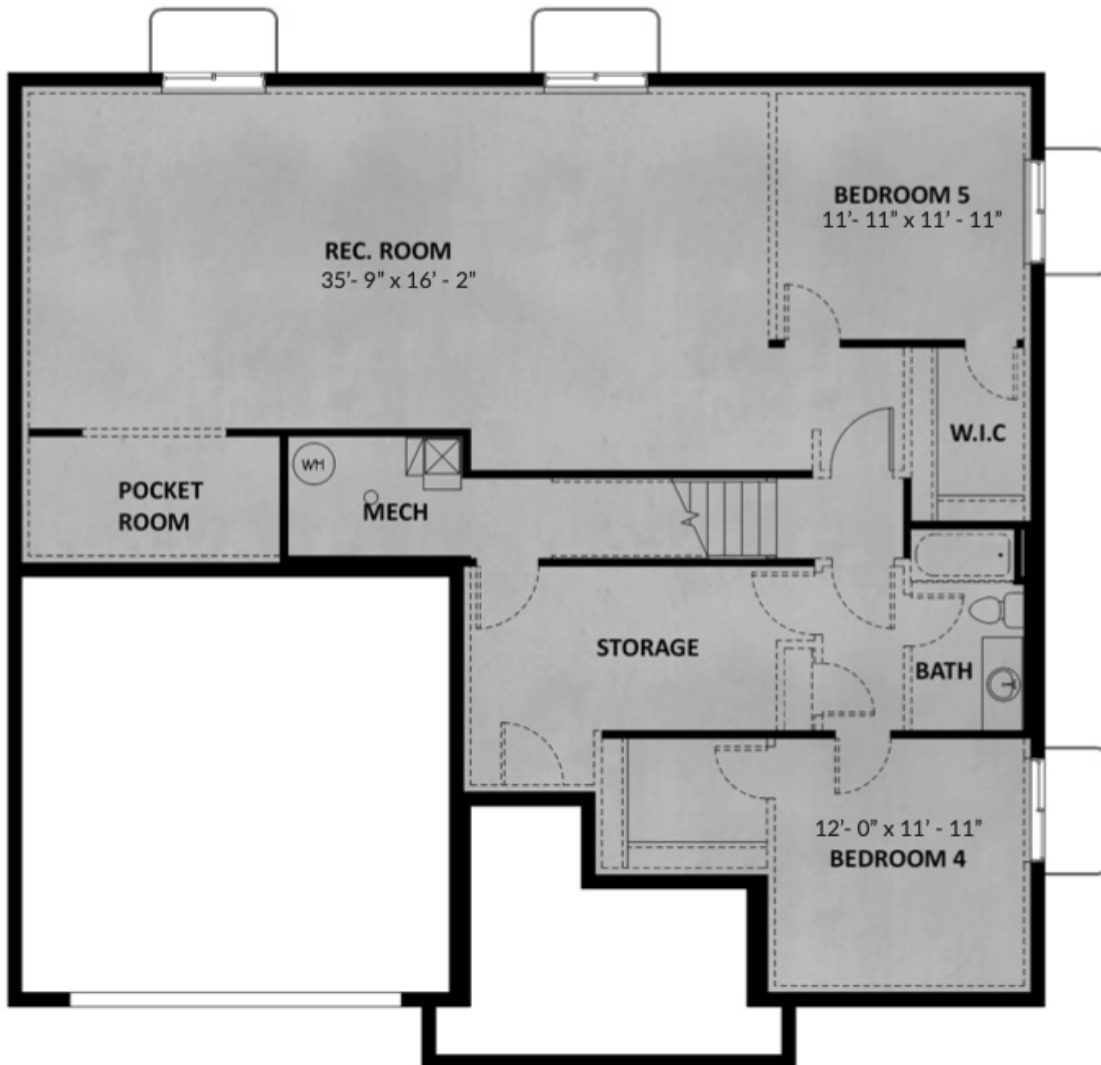
Modern and comfortable all at once, the Oakley is the home you've always dreamed of. Fall in love with this innovative floor plan with its 3 bedrooms, 2 bathrooms, 1,634 finished square feet, and 3,209 total square feet. The best part about this home is its openness. With the kitchen flowing into the beautiful family room, you'll notice how wide and expansive the main floor is. Look up and marvel at the high ceilings or settle into your coziest spot to spend the night doing what you love the most. Relax in the mornings and unwind in the evenings in your stunning master suite and bathroom. On the other side of the home, you'll find two bedrooms and a bathroom. The placement of these rooms guarantees that your family and guests are always comfortable. The main floor also comes complete with a convenient laundry area, a spacious garage, and the option for a three-car garage. For more living space, you can finish your basement with a recreation room, two bedrooms, a bathroom, a storage space. Transform your recreation room into whatever you wish—a home office, children's playroom, movie lounge, or more.

## FLOOR PLAN



**MAIN LEVEL**

## FLOOR PLAN



**UNFINISHED BASEMENT**

## FLOOR PLAN



**Finished Basement Floor**