



ALDER TRANSITIONAL

SINGLE FAMILY

Sq ft: 2,479

Beds: 3

Bath: 2.0

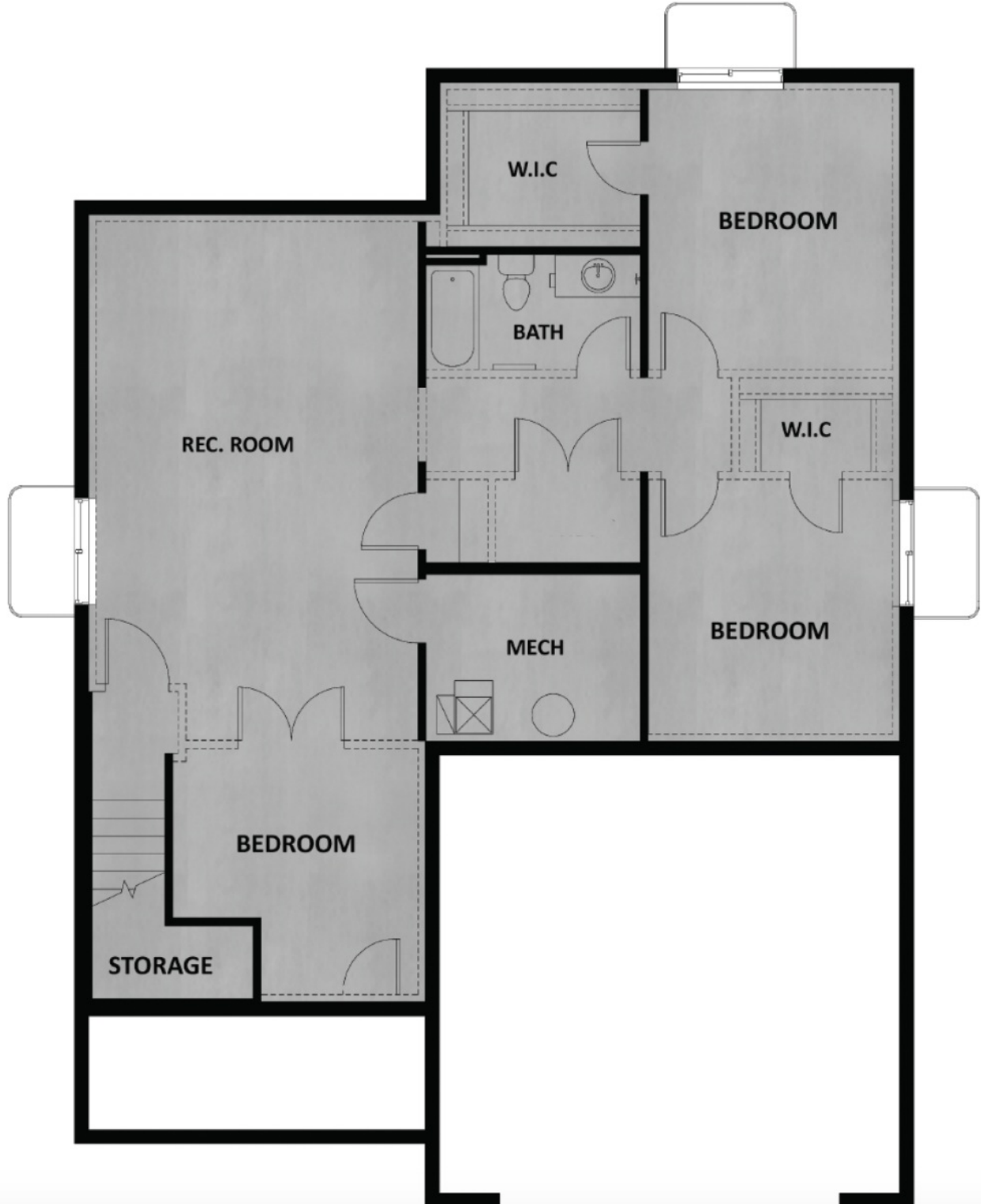
ABOUT THIS HOME

You will love living in the Alder rambler plan. Step into the open concept main floor that feels bright and spacious with 9' ceilings, and plenty of windows throughout. Your dining room, kitchen, and living room, flow together and create the perfect space for entertaining or spending time as a family. Down the hall you have a laundry room, bathroom, and two secondary bedrooms. You will also find a beautiful owner's suite with more large windows, a walk-in closet, and a spa-like owner's bathroom. Downstairs you have the option for more space with a finished basement. This gives you a large recreation room, two more bedrooms with a walk-in closet in each, and an additional bathroom.

FLOOR PLAN



FLOOR PLAN



FLOOR PLAN



FLOOR PLAN

