



**1168 S 1225 W #207,  
CLEARFIELD, UT  
84015**

**SINGLE FAMILY  
CALL FOR PRICE**

Sq ft: 3,213  
Beds: 3  
Bath: 2.5

## **ABOUT THIS HOME**

INCENTIVE: \$20,000

Included Features:

3'x4' Rear Composite Deck

Upgraded Cabinets Throughout

6'x5' Kitchen Island With Quartz Countertops

Whirlpool Fingerprint Resistant Gas Kitchen Appliances

Quartz Countertops Throughout

84" Double Sink Vanity In Owner's Suite Bath

Luxury Vinyl Flooring

60"x42" Walk-In Shower In Owner's Suite

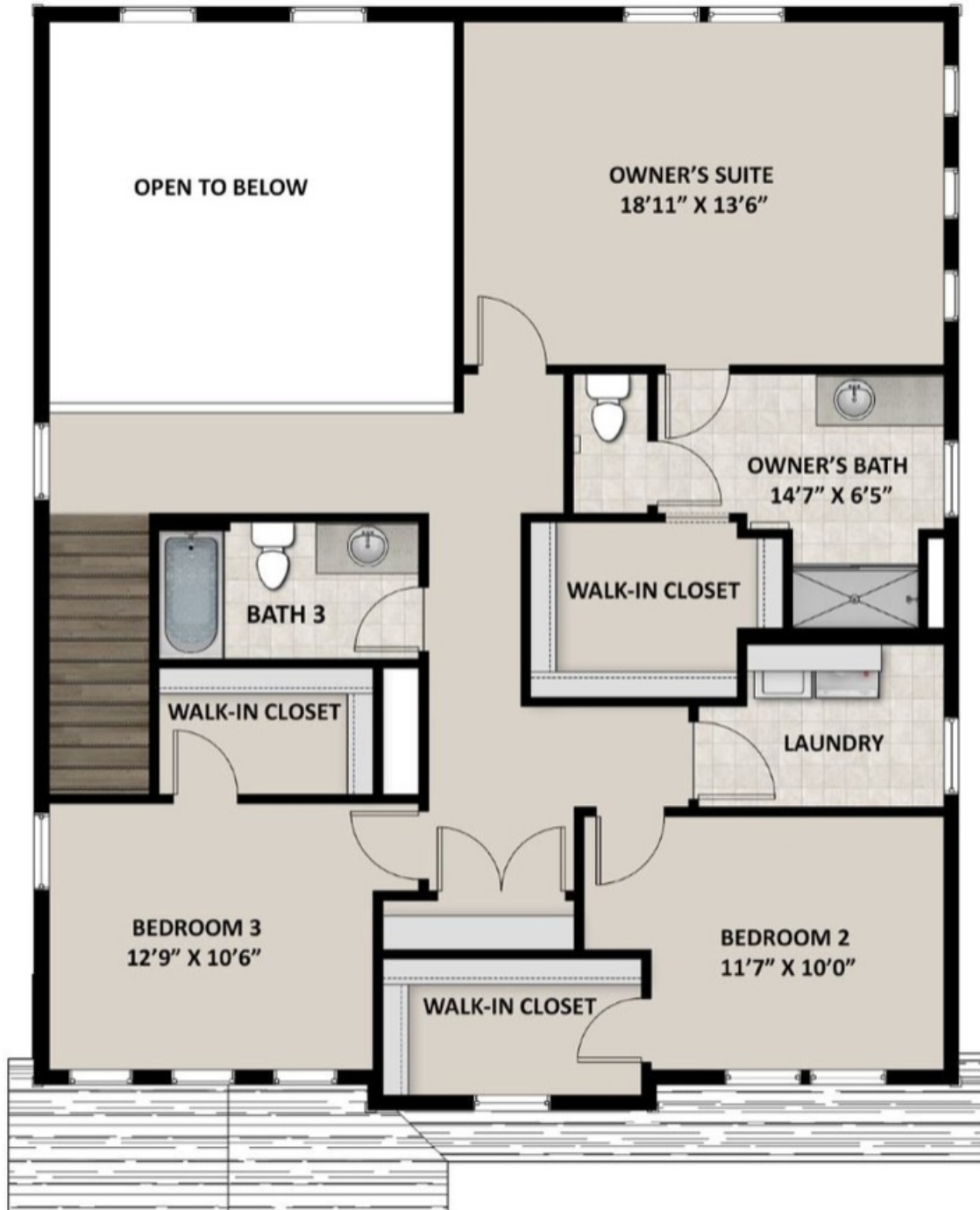
Open Interior Metal Railing

Can Lighting In Kitchen, Family Room, & Owner's Suite

## FLOOR PLAN



## FLOOR PLAN



## FLOOR PLAN

