



SPRUCE

SINGLE FAMILY

CALL FOR PRICE

Sq ft: 3,682

Beds: 3

Bath: 2.5

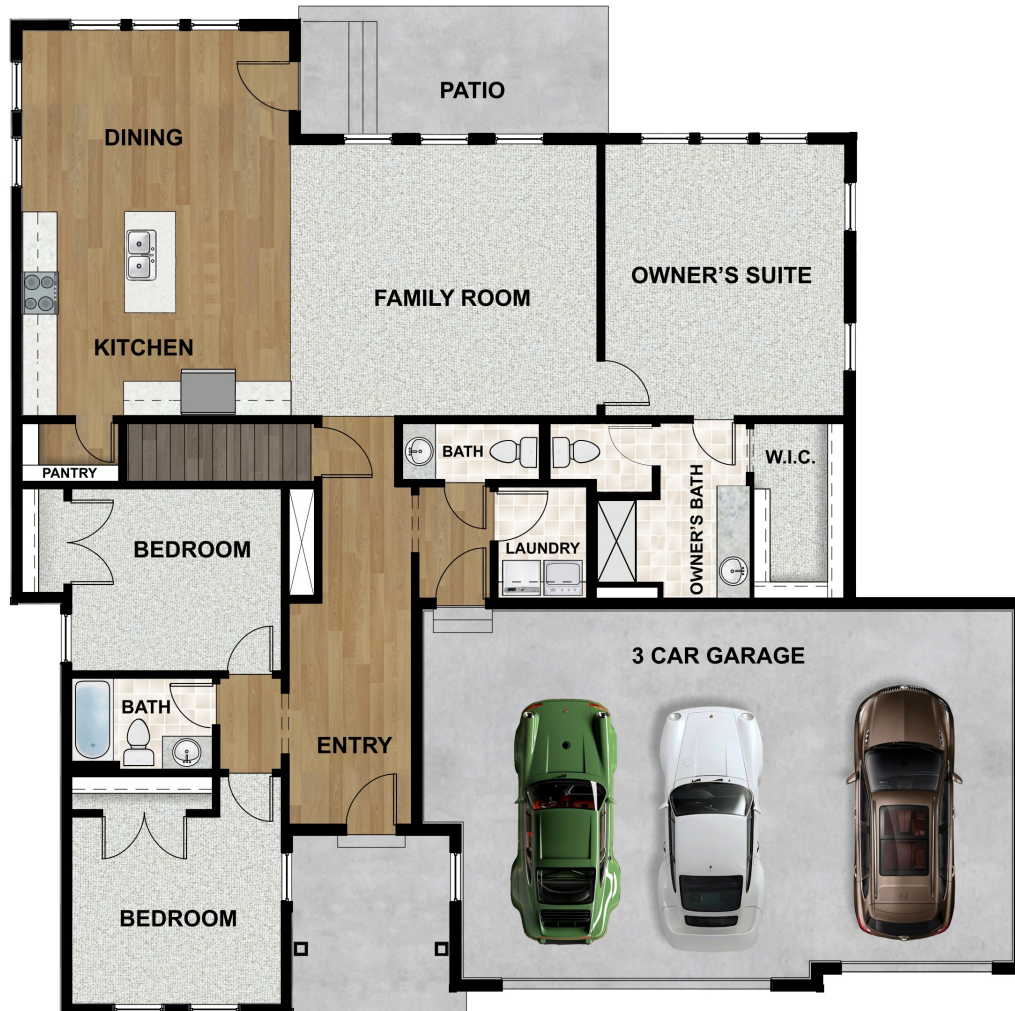
Garage: 2

ABOUT THIS HOME

The Spruce is one of the rambler plans available in our new Alpine Springs community. With 3 bedrooms, 2.5 bathrooms, 1,904 finished sq ft, and 3,682 total sq ft, you'll have all the room you need! Off the entryway you have 2 bedrooms and a full bathroom, as well as a convenient mudroom, powder bathroom, and laundry room. Continuing into the home, you'll find a bright family room that flows into a gorgeous kitchen with our signature island, a walk-in pantry, and a spacious dining area. Off the family room you have a luxurious Owner's Suite with a spa-like Owner's bathroom, featuring a walk-in shower and large walk-in closet. Outside you have a 2 car garage with an optional 3rd car garage. You have the opportunity for even more space with an optional finished basement. This will give you a large recreation room, and an additional bedroom and bathroom.

This home features an optional Rental Suite. [Learn more about our Rental Suites here!](#)

FLOOR PLAN



MAIN LEVEL

ALPINE SPRINGS SPRUCE

FLOOR PLAN



FLOOR PLAN

