



EVERLY

TOWNHOUSE

CALL FOR PRICE

Sq ft: 1,876

Beds: 3

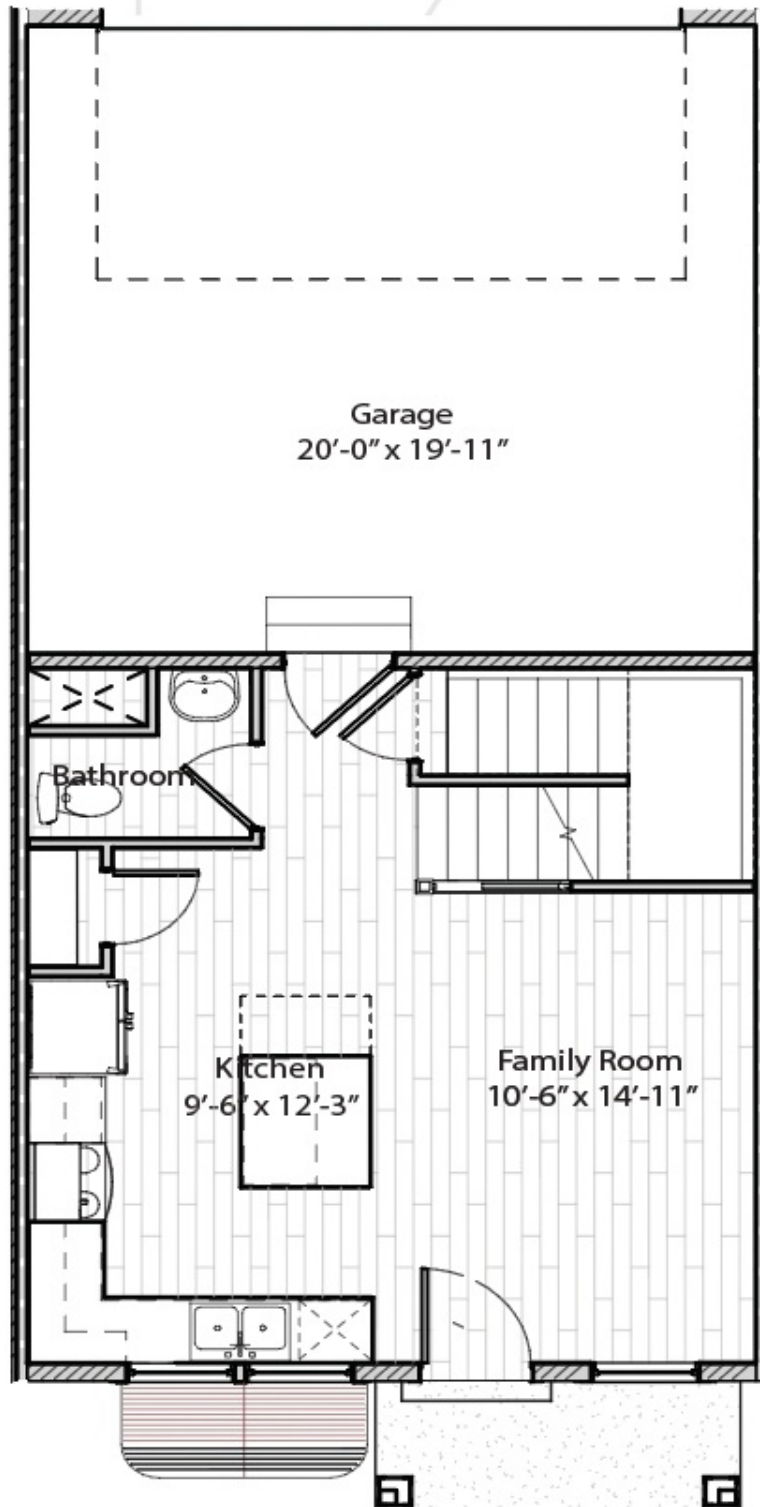
Bath: 2.5

Garage: 2

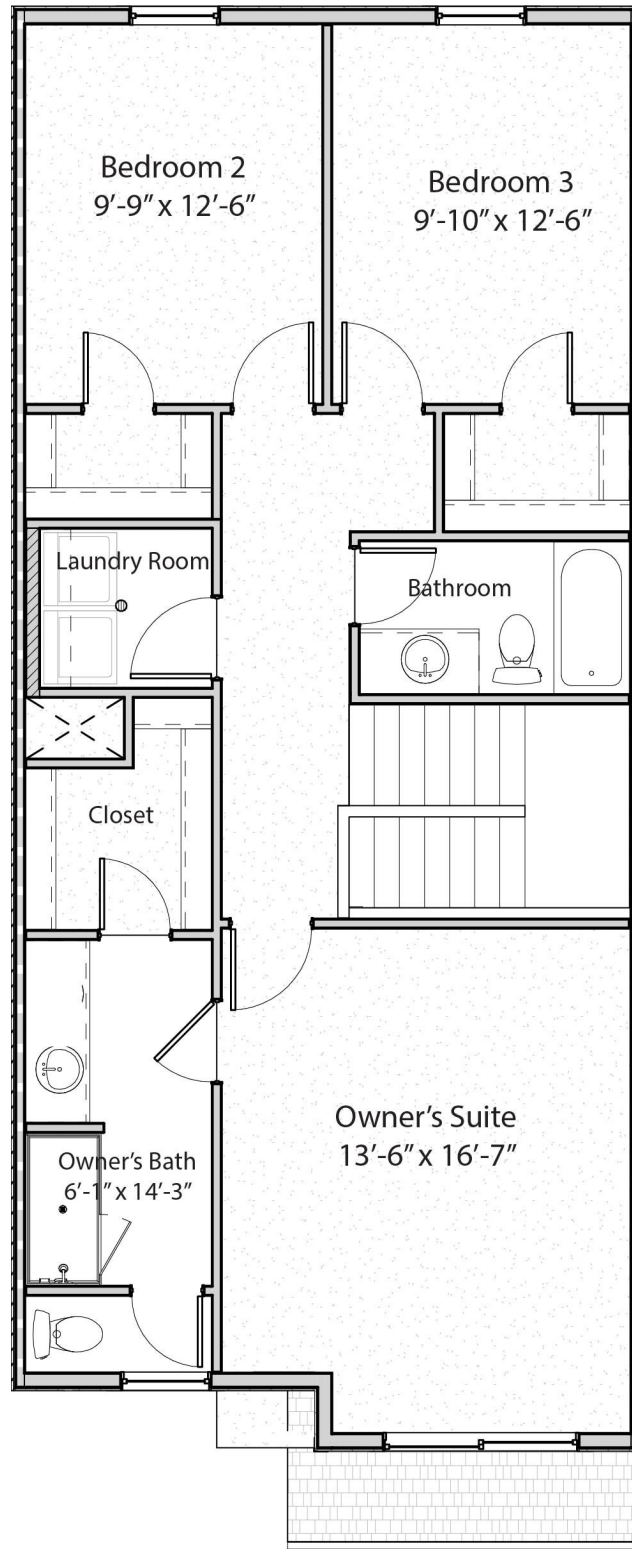
ABOUT THIS HOME

Enjoy living in our Everly townhome floor plan featuring 3 bedrooms, 2.5 bathrooms, 1,392 finished square feet, 1,877 total square feet and 2-car garage. Featuring a modern design with 9' ceilings and an open-concept on the main floor. Open the front door to a spacious great room and kitchen that showcases a pantry, and conveniently located powder bath. Upstairs you'll find a laundry room, secondary bathroom, and additional bedrooms with a walk-in closet in each. The private Owner's Suite is bright and offers plenty of space to create the perfect design for a retreat. The unfinished basement is included with the opportunity to add square footage for a theater or area to just hang out. You'll want to call this new Scenic Townhome your home.

FLOOR PLAN



FLOOR PLAN



FLOOR PLAN

