



## ECLIPSE

SINGLE FAMILY

**CALL FOR PRICE**

Sq ft: 3,173

Beds: 3

Bath: 2.5

Garage: 2

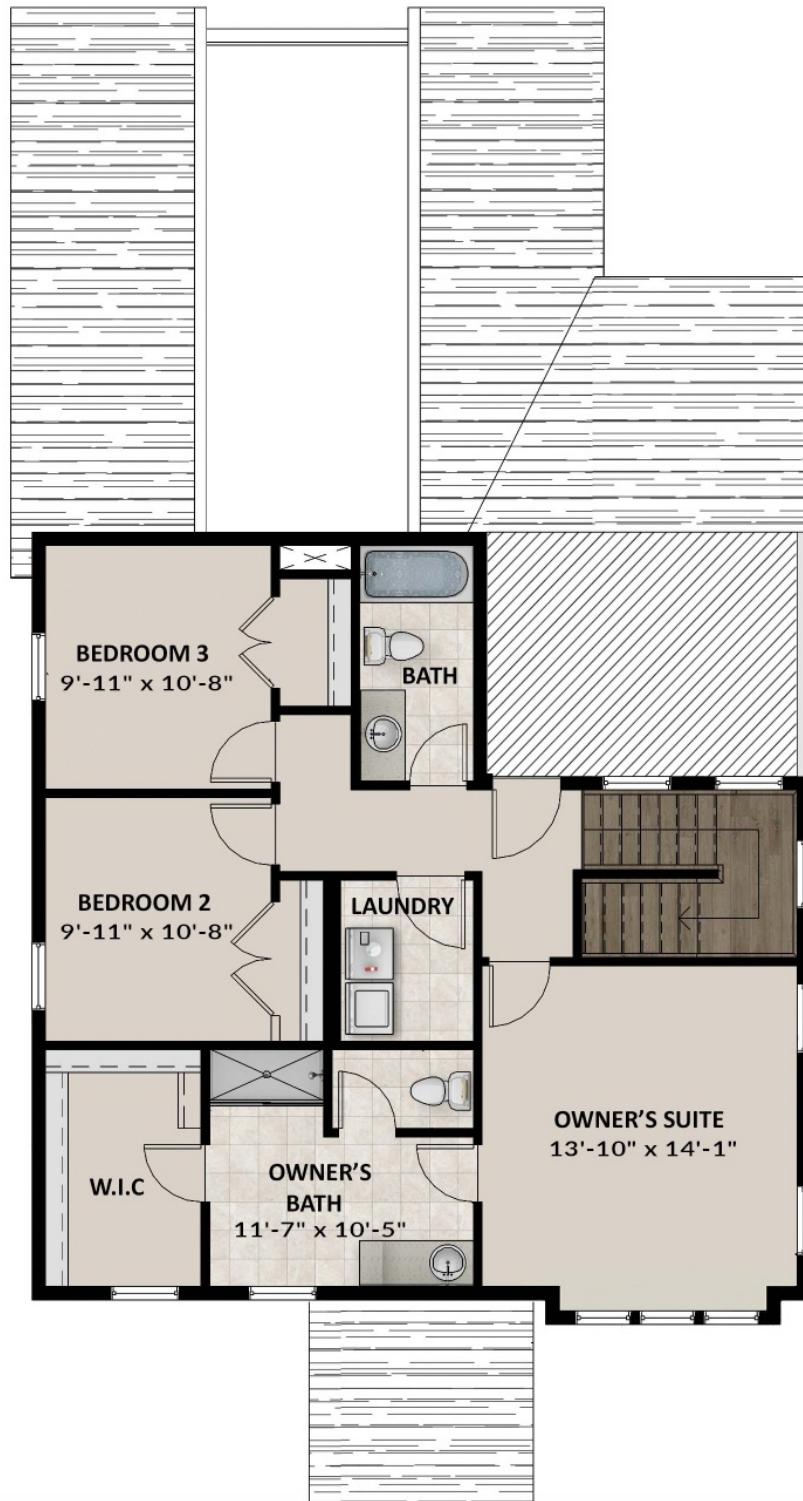
## ABOUT THIS HOME

In the Eclipse, you wake up every morning with the world at your fingertips. Modern, luxurious, and homey, this 3-bedroom, 2.5 bathroom floor plan radiates an open, airy light and a lot of heart. Go ahead and take a look inside—you're finally home! Transform the flex room off the entryway to a home office, media room, or playroom. Past this space, you will find a charming dining room, a gorgeous kitchen with an island, and a large pantry. It's the perfect space to gather and enjoy friends and family. Outside is a massive 2 garage to fit your needs. Upstairs, leisure awaits in your luxurious owner's suite. Included in your suite is a spa-like bathroom with a walk-in shower and a large walk-in closet, making it the perfect space to relax and unwind. The second floor also has 2 spacious bedrooms with closets, a bathroom, and a well-placed laundry area. If you want to add even more space to add below your home, you have the option to finish the basement with a roomy recreation area, a comfortable bathroom, and 2 extra bedrooms with walk-in closets. With 2,124 finished square feet and 3,173 total square feet of beautiful space, you have all the room you need to live your best life yet.

## FLOOR PLAN



## FLOOR PLAN



## FLOOR PLAN

