



## ASHWOOD

SINGLE FAMILY

**CALL FOR PRICE**

Sq ft: 1,930

Beds: 3

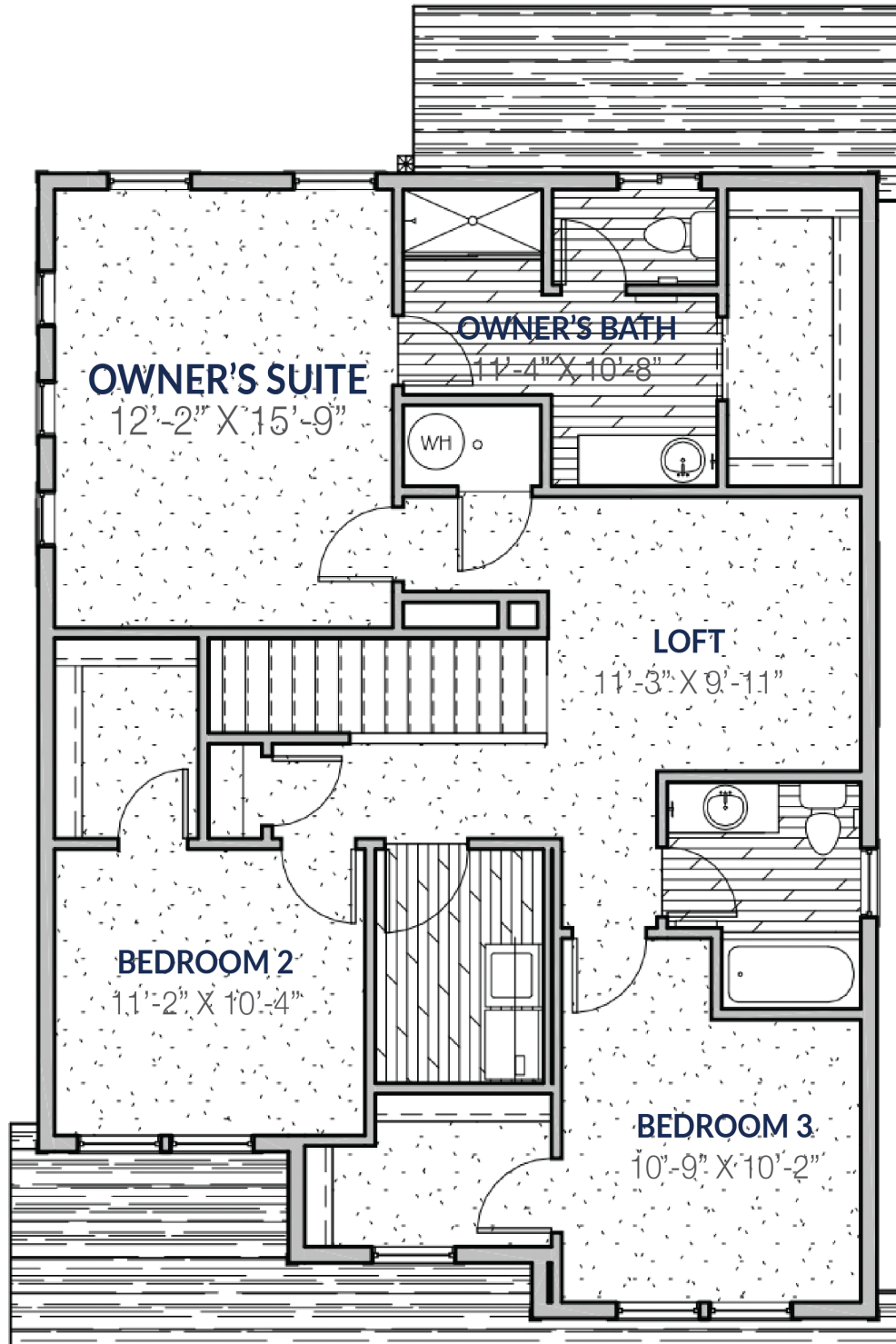
Bath: 2.5

Garage: 2

## ABOUT THIS HOME

The Ashwood plan is light and bright with lots of windows. The open concept great room is ideal for entertaining and offers easy access to the private backyard. The kitchen features a large island, a walk-in corner pantry and the dining area is strategically placed at the side for an extra wow factor. The great room is perfect for lounging, entertaining, or gatherings with family or friends. In the kitchen and dining space, you'll find a large island, walk-in pantry, and updated appliances. The mud room offers a private entrance from the garage with a large storage space. You can kick back and relax on the second floor of this home with its two bedrooms with walk-in closets and a roomy owner's suite with a big walk-in closet, water closet, and walk-in shower. Near the stairs is the laundry room with its own closet space; down the hall is a convenient bathroom.

## FLOOR PLAN



## FLOOR PLAN

